

IP-Enabled Horn Speaker

DW-SWSP15A



WHAT'S IN THE BOX

IP horn speaker		1	Quick setup guide		1
Waterproof cap		1			

Note: Mounting fasteners not included. Use M8 fasteners or screws with outer diameter that is 5/16" or smaller.

NOTE: Download all your support materials and tools in one place.

1. Go to: <http://www.digital-watchdog.com/resources>
2. Search your product by entering the part number in the **'Search by Product'** search bar. Results for applicable part numbers will populate automatically based on the part number you enter.
3. Click **'Search'**. All supported materials, including manuals and quick start guide (QSGs) will appear in the results.



INSTALLATION

- Using the speaker's mounting bracket, mark and drill the necessary holes in the mounting surface.
- Pass wires through and make all the necessary connections. Connect to the camera's network. Use the waterproof cap if installed outdoor. See diagram on the right for installation.

NOTE: The speaker can be powered by PoE or 12V/24V DC. Both power sources CANNOT be used at the same time.

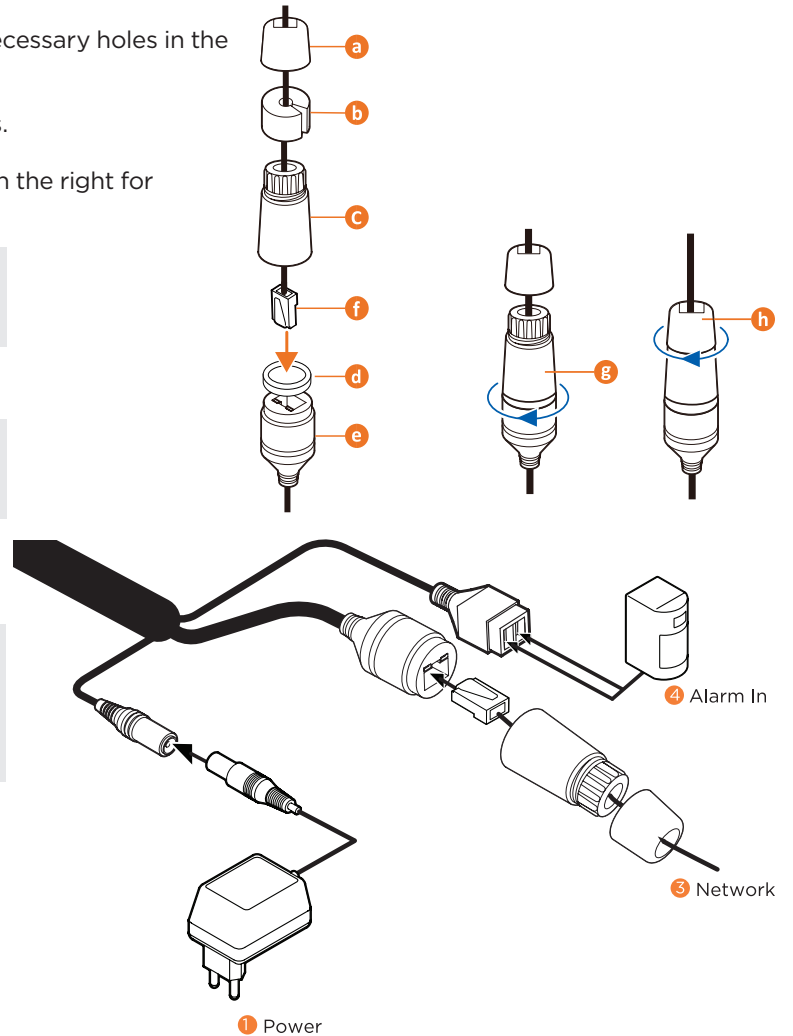
- Secure the speaker to the mounting surface.

NOTE: Mounting fasteners not included. Use M8 fasteners or screws with outer diameter that is 5/16" or smaller.

- Complete the speaker's setup using the speaker's web interface. Open a web browser and enter the speaker's IP address.

NOTE:
 Default IP address: 192.168.1.50.
 Default username: admin
 Default password: admin
 (password must be changed during the initial installation)

- Change the IP address to the same subnet range of the cameras.



ADDING TO THE DW SPECTRUM

- Open the DW Spectrum client.
- DW-SWSP15 should be listed under the resource tree if the auto discovery is enabled and the DW Spectrum Mediaserver and speaker is in the same network.

* Add the speaker manually if the auto discovery is disabled.

NOTE: See the full product manual for web viewer setup, functions and camera settings options.

DIMENSIONS

