

**Compressor**<sup>™</sup>  
Analog to IP Video Encoder

DW-CP16



Username: **admin** Password: **123456**

NOTE: For the full manual and the latest firmware, please visit our website at [www.digital-watchdog.com](http://www.digital-watchdog.com) and search 'DW-CP16'.

WHAT'S IN THE BOX

QSG Manual		1 Set	Power Cord		1 Set
Socket Converters – 3pcs		1 Set	Rack Mount Ears – 2pcs		1 Set
Terminal Blocks		1 Set	Screws – 4pcs		1 Set

**Attention: This document is intended to serve as a quick reference page for initial set-up. It is recommended that the user read the entire instruction manual for complete and proper Encoder usage.**

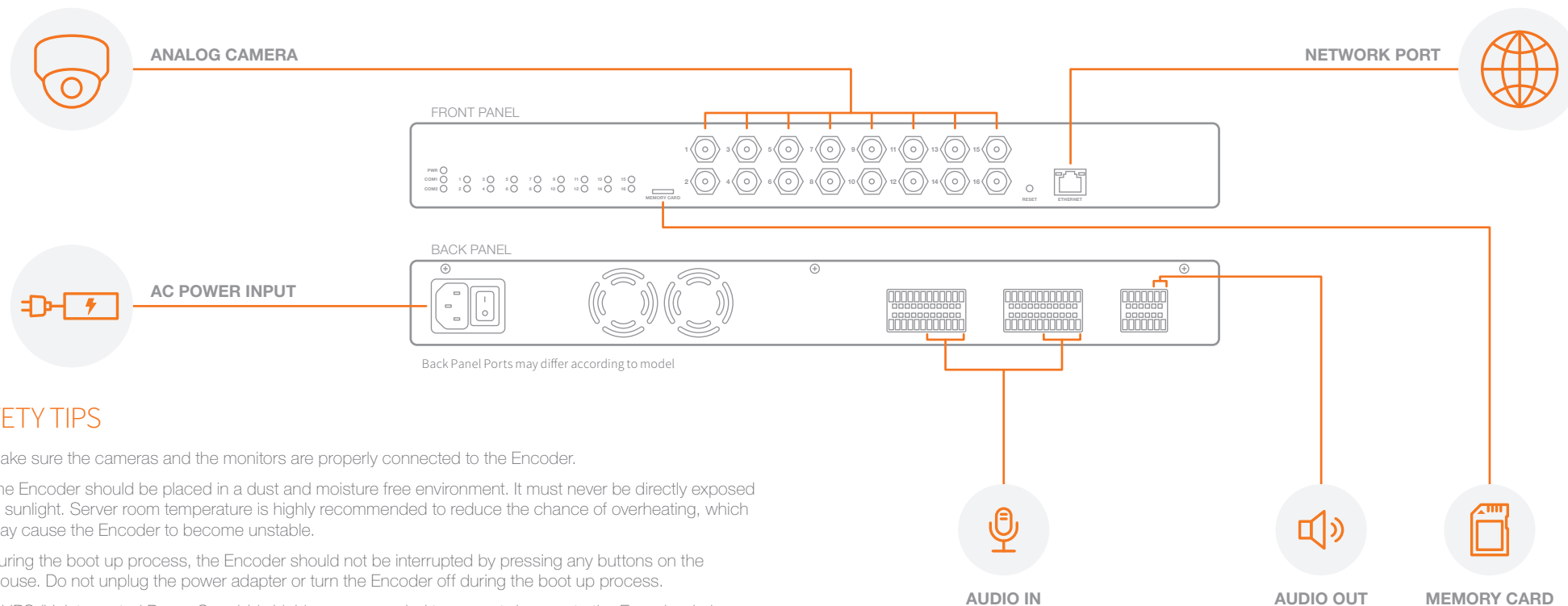
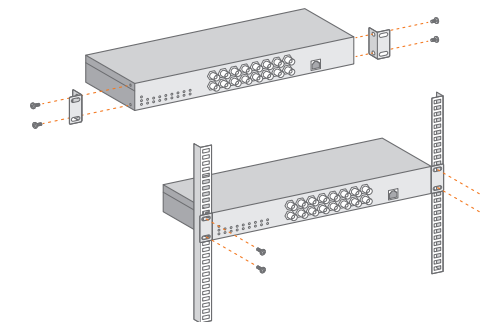
Step 1 – CONNECTING TO THE COMPRESSOR ENCODER

1. Mount and install all necessary cameras and external devices. Refer to their individual manuals for additional information.
2. Place the Encoder in its final position. See installation tips below.
3. Connect all necessary cables to the Encoder.
4. Once all additional devices have been properly connected to the Encoder, connect the Encoder to an appropriate power supply. The Encoder will boot up automatically.

Step 2 – MOUNTING THE ENCODER

The Compressor comes with rack mount ears and is compatible with 19" Rack Mounts. To mount the Compressor to a 19" rack:

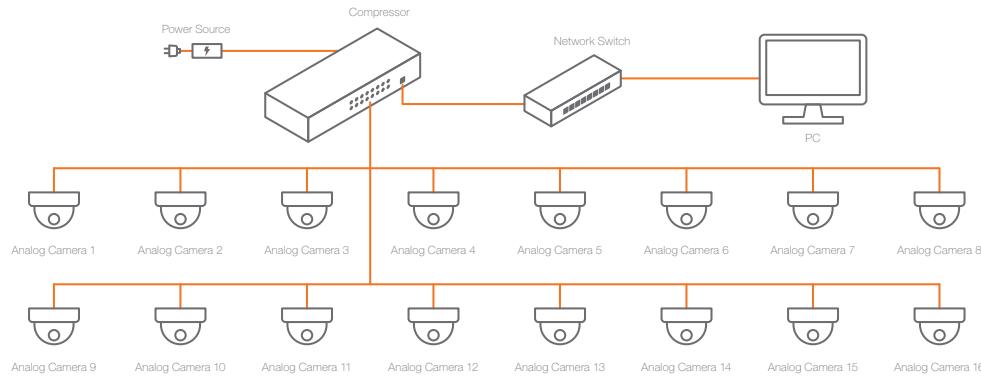
1. Attach the rack mount ears to each side of the encoder using the bundled screws.
2. Secure the encoder onto the 19" rack mount using the four (4) included screws.



SAFETY TIPS

1. Make sure the cameras and the monitors are properly connected to the Encoder.
2. The Encoder should be placed in a dust and moisture free environment. It must never be directly exposed to sunlight. Server room temperature is highly recommended to reduce the chance of overheating, which may cause the Encoder to become unstable.
3. During the boot up process, the Encoder should not be interrupted by pressing any buttons on the mouse. Do not unplug the power adapter or turn the Encoder off during the boot up process.
4. A UPS (Uninterrupted Power Supply) is highly recommended to prevent damage to the Encoder during a power outage.

### Step 3 – COMPRESSOR CONNECTION EXAMPLE



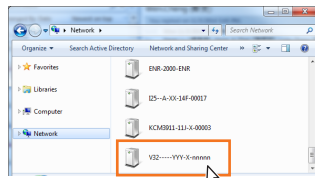
### Step 4 – DW IP FINDER

#### On Network with DHCP Server / Router (Automatic IP)

1. Connect the device and the PC within the same network segment. Once connected, an IP address will be assigned to the Encoder.
2. Find the Encoder via Windows Explorer or IP Utility.

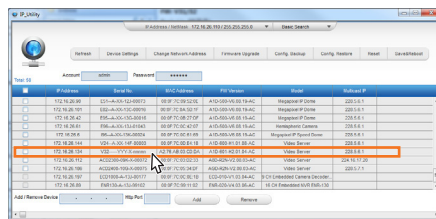
#### By Windows Explorer

- a. Go to Start > My Computer > Network.
- b. Double-click on the device name.



#### By IP Utility

- a. Download IP Utility from our website ([www.digital-watchdog.com](http://www.digital-watchdog.com)).
- b. Run IP Utility to start searching for network devices.
- c. Click the IP address of the Encoder.



3. The Web Configurator appears with the IP address of the Encoder on the URL bar. Login to access the Encoder.

#### On Network without DHCP Server (Default IP)

1. If necessary, configure the IP settings of your PC to match with the network segment of the Encoder.

**Encoder Defaults**

IP Address: **192.168.0.100**

Subnet: **255.255.255.0**

➔

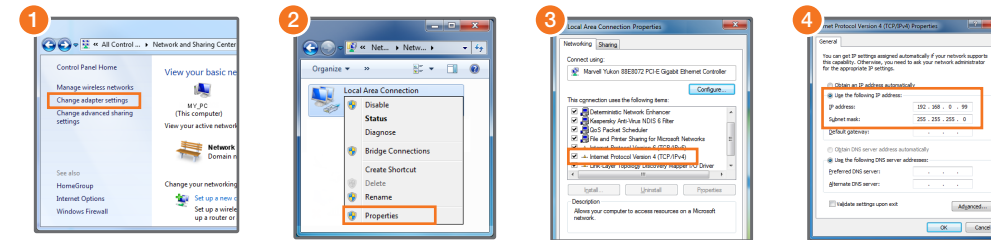
**PC can be assigned with**

IP Address: **192.168.0.99 or 192.168.0.101 or 192.168.0.102 and so on**

Subnet: **255.255.255.0**

#### How to configure the PC IP address?

Click **Start > Control Panel > Network and Sharing Center > Change Adapter Settings**. Then follow the steps below:



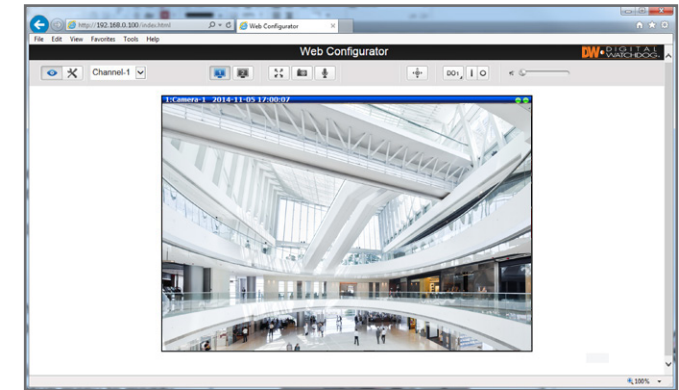
2. Open a web browser and type **192.168.0.100** on the URL address bar. The Web Configurator appears. Login to access the Encoder.

NOTE: For full functionality, it is recommended to use Microsoft Internet Explorer®. When using non-IE browsers, free 3rd party software plug-ins may be required. Refer to the device Firmware Manual for more information.

### Step 5 – WEB VIEWER

1. Open an Internet Explorer web browser (other web browsers are supported but with limited features).
2. Enter the Compressor's IP address in the address bar.
3. Enter the Compressor's username and password.

Default values are **username: admin | password: 123456**



NOTE: The Compressor™ is fully compatible with Digital Watchdog's DW Spectrum™ IPVMS. 4- and 16- channel recording licenses are sold separately.